



**Golf Cart | Marine  
Energy Storage**



# TIGER LITHIUM® Product Catalogue

Golf Cart | Marine | Energy Storage

Tiger Lithium Power, LLC

✉ [sales@tigerlithium.com](mailto:sales@tigerlithium.com)

🌐 [www.tigerlithium.com](http://www.tigerlithium.com)



☎ 1-972-69-TIGER/1-972-698-4437

[www.tigerlithium.com](http://www.tigerlithium.com)

✉ [sales@tigerlithium.com](mailto:sales@tigerlithium.com)

☎ 1-972-69-TIGER/1-972-698-4437

# Industry-Leading Technologies



## Sentinel-LNX™

Monitor & Control Your Battery  
from Your Smartphone

**Hiberstate**

## Hiberstate™ Mode

Eliminate Phantom Draw  
Discharge in Storage



## Tiger Rescue Reserve™

Never Get Stranded Again Due to  
a Dead Starting Battery



## TempSafe Charge™

Worry-Free Charging in Cold  
Temperatures



## Outboard Optimized

Tested Safe for All Alternator  
or Stator Charging Systems

**Tiger Lithium Marine**  
**5+1 Warranty**

## 5+1 Marine Warranty

5-Year Full + 1-Year Extension



## 12V Starting Batteries - The Most Tested. The Most Trusted.

Tiger Lithium® Starting Batteries have undergone extensive lab and field testing and have been proven to meet or exceed Mercury/Outboard®'s requirements for lithium starting batteries and are safe for use with Yamaha®'s stator-based charging systems.\*



## 12V Deep Cycle Batteries - Extremely Versatile. Unmatched Reliability.

When longer runtimes are needed, up to four Tiger Lithium® 12V batteries can be wired in parallel to increase capacity up to 480Ah (4 x 120Ah) to keep your most demanding 12V applications operating at peak efficiency.



### Battery Specs

MODEL	TLMS12120H	TLMS12180H
Rated Capacity	120 Ah	180 Ah
Nominal Voltage	12.8 V	12.8 V
Recommended Charge Voltage	14.4 V	14.4 V
BMS Charge Voltage Cut-Off	15.4 V	15.4 V
Discharge Cutoff	10 V	10 V
Max Charge Current	60 A	90 A
Max Continuous Discharge Current	120 A	180 Ah
Max Pulse Discharge Current	800 A / 8 s	800 A / 8 s
Weight	Approx 37.3 lbs.	Approx 48.5 lbs.
	16.9 kg	22 kg
Dimensions(L*W*H)	Group 31	Group 31
	13 X 6.8 X 9.3 inches	13 X 6.8 X 9.3 inches
	330 mm x 173 mm x 236 mm	330 mm x 173 mm x 236 mm

Note : All product names, logos, and brands are property of their respective owners. All company names used are for identification purposes only. Use of these names, logos, and brands does not imply endorsement.

### Battery Specs

MODEL	TLMD12105	TLMD12120
Rated Capacity	105 Ah	120 Ah
Nominal Voltage	12.8 V	12.8 V
Max Charge Voltage	14.4 V	14.4 V
Discharge Cutoff	10 V	10 V
Max Charge Current	52.5 A	60 A
Max Continuous Discharge Current	105 A	120 A
Max Pulse Discharge Current	210 A / 3 s	240 A / 3 s
Weight	Unheated 26 lbs. / 11.79kg	Unheated 28.6 lbs. / 12.97 kg
	Heated 30.1 lbs. / 13.6kg	Heated 32.6 lbs. / 14.79 kg
Dimensions(L*W*H)	Group 27	Group 27
	12 X 6.8 X 8.89 inches	12 X 6.8 X 8.89 inches
	306 mm x 173 mm x 225.8 mm	306mm x 173mm x 225.8mm

## 24V Trolling Batteries - Highest Capacities. Unrivalled Performance.

The 24 V Tiger Trolling Battery Series is engineered to deliver crisp, consistent power for trolling motors, combining high output performance with the versatility to connect in parallel for increased capacity.

Available in Group 27 and Group 31 case sizes, this series offers the highest capacities currently available in BCI-compliant Group 27 and 31 formats, supporting up to a 2C continuous discharge rate to meet the demands of today's most power-hungry marine systems.

When connected in parallel, the system can reach up to 360 Ah (4 x 90 Ah) of total capacity, ensuring extended runtime and reliable power on the water.



## 36V Trolling Batteries - Reduce Weight. Save Space. Longer Runtimes.

A single Tiger Lithium® 36V battery can replace three lead-acid or AGM batteries, providing longer runtimes while eliminating over 50 kg of weight. With the option to connect two 60Ah units in parallel, total capacity can be increased to 120Ah for extended performance on the water.

Up to two 36V batteries can also be connected in series to create a 72V power system, commonly used with an inverter to produce 120V AC output when required.

The 36V Tiger Lithium® is among the most popular trolling batteries in today's market, trusted for its high efficiency, reliability, and compact design.



### Battery Specs

MODEL	TLMD2460	TLMD2490
Rated Capacity	60 Ah	90 Ah
Nominal Voltage	25.6 V	25.6 V
Max Charge Voltage	28.4 V	28.4 V
Discharge Cutoff	20 V	20 V
Max Charge Current	30 A	45 A
Max Continuous Discharge Current	120 A	120 A
Max Pulse Discharge Current	180 A / 3 s	270 A / 3 s
Weight	Unheated 28.2 lbs. / 12.8 kg Heated 31.7 lbs. / 14.4 kg	Unheated 39.5 lbs. / 17.9 kg Heated 46.1 lbs. / 20.9 kg
Dimensions(L*W*H)	Group 27 12 X 6.8 X 8.89 inches 306 mm x 173 mm x 225.8 mm	Group 31 13 X 6.8 X 9.3 inches 330 mm x 173 mm x 236 mm

### Battery Specs

MODEL	TLMD3660
Rated Capacity	60 Ah
Nominal Voltage	38.4 V
Max Charge Voltage	42.6 V
Discharge Cutoff	30 V
Max Charge Current	30 A
Max Continuous Discharge Current	120 A
Max Pulse Discharge Current	240 A / 5 s
Weight	Unheated 39.81 lbs. / 18.06 kg Heated 46.6 lbs. / 21.14 kg
Dimensions(L*W*H)	Group 31 13 X 6.8 X 9.3 inches 330 mm x 173 mm x 236 mm

# 16 V High Performance Batteries for Marine Electronics

The Tiger Lithium® 16V High-Performance Series is purpose-built for marine electronics, delivering the clean, stable power required by sonar imaging systems, large digital displays, and forward-facing sonar units. Compared with traditional 12V batteries, the 16V platform provides up to 20% longer runtime and enhances the clarity, refresh rate, and responsiveness of advanced sonar and navigation equipment.

Engineered for anglers who demand precision and reliability, it ensures optimal performance and extended operation for high-draw marine electronics.



## Battery Specs

MODEL	TLMD1675	TLMD16105
Rated Capacity	75 Ah	105 Ah
Nominal Voltage	16 V	16 V
Max Charge Voltage	17.75 V	17.75 V
Discharge Cutoff	12.5 V	12.5 V
Max Charge Current	37.5 A	52.5 A
Max Continuous Discharge Current	75 A	105 A
Max Pulse Discharge Current	150 A / 3 s	210 A / 3 s
Weight	Unheated 23.81 lbs. / 10.8 kg Heated 28.22 lbs. / 12.8 kg	Unheated 31.31 lbs. / 14.2 kg Heated 36.6 lbs. / 16.6 kg
Dimensions(L*W*H)	Group 27 12 X 6.8 X 8.89 inches 306 mm x 173 mm x 225.8 mm	Group 31 13 X 6.8 X 9.3 inches 330 mm x 173 mm x 236 mm

MODEL	TLMD16135
Rated Capacity	135 Ah
Nominal Voltage	16 V
Max Charge Voltage	17.75 V
Discharge Cutoff	12.5 V
Max Charge Current	67.5 A
Max Continuous Discharge Current	135 A
Max Pulse Discharge Current	270 A / 3 s
Weight	Unheated 38.36 lbs. / 17.4 kg Heated 43.43 lbs. / 19.7 kg
Dimensions(L*W*H)	Group 31 13 X 6.8 X 9.3 inches 330 mm x 173 mm x 236 mm

## Portable Power Stations

The Tiger 1324 Wh Portable Power Station delivers reliable, high-capacity energy for marine and outdoor adventures. Designed for versatility, it powers everything from marine electronics and lighting to camping gear and mobile devices. With multiple output options and fast recharging, it's the perfect all-in-one solution for boaters, anglers, and outdoor enthusiasts who need dependable power anywhere.

### Hour of Power



Laptop 63Wh  
**20** Times



TV 80W  
**16** Hours



Electric Drill 900W  
**1.4** Hours



Light 10W  
**130** Hours



Projector 200W  
**6.5** Hours



Fruit Squeezer 300W  
**4.4** Hours



Electric Fry Pan 1000W  
**1.3** Hours



Coffee Machine 1400W  
**50** mins



Microwave Oven 900W  
**1.4** Hours



Refrigerator 100W  
**13** Hours

### Battery Specs

MODEL	TLPB1324
Capacity	1324 Wh
AC Output	120 V / 230 V 2400 W
Power	2400 W
USB Output	5V 2.4 A *3
Type C	Pd 100W*3
Input	13 - 60 V 25 A Max , Solar Max MPPT 1300 W
Weight	23 kg / 50.6 lbs.
Work Temperature	Charging: 0-45°C, Discharging: -10-60°C
Dimensions (L*W* H )	446*326*272 mm / 17.56 × 12.83 × 10.71 inches

**1324Wh**  
Portable Power Station



# Tiger Lithium® Marine Battery Chargers

## Intelligent Multi-Chemistry, Multi-Voltage Charging

Tiger Lithium®'s marine chargers simplify onboard power by delivering intelligent multi-chemistry, multi-voltage charging from a single premium charger body. Designed to reduce wiring, save space, and eliminate the need for multiple chargers, they create a cleaner, more efficient electrical system for modern marine installations.

Available in 1-bank, 2-bank, and 3-bank models, Tiger Lithium® chargers support Lead Acid, AGM, and Lithium batteries while offering up to four selectable voltages—12 V, 16 V, 24 V, and 36 V—allowing one charger to support a wide range of battery configurations.

Each charger is built with a corrosion-resistant aluminum enclosure and fully potted internal circuitry for maximum durability in harsh marine environments. Every model is tested to IP67 standards for dependable freshwater and saltwater installation.

An integrated LED control panel on each bank allows simple selection of battery chemistry and voltage based on the application. All chargers accept 100-240 V AC input and include 6-foot output leads, inline fuses, and pre-installed ring terminals for fast, professional installation and long-term reliability.



## One Bank On-Board Chargers

Part No.	Model
TLMC1B1216T	1 BANK 12 V / 16 V SW -15 A
TLMC1B24T	1 BANK 24 V -10 A
TLMC1B36T	1 BANK 36 V -10 A

## Two Bank On-Board Chargers

Part No.	Model
TLMC2B121216T	2 BANK 12 V -15 A, 12 V / 16 V SW -15 A
TLMC2B1224T	2 BANK 12 V SEL-15 A, 24 V -10 A
TLMC2B1236T	2 BANK 12 V SEL-15 A, 36 V -10 A
TLMC2B2424T	2 BANK 24 V -10 A, 24 V -10 A
TLMC2B3636T	2 BANK 36 V -10 A, 36 V -10 A

## Three Bank On-Board Chargers

Part No.	Model
TLMC3B12SELX3T	3 BANK 12 V SEL-15 A, 12 V SEL-15 A, 12 V SEL-15 A
TLMC3B1212161216T	3 BANK 12 V SEL-15 A, 12 V / 16 V SW -15 A, 12 V / 16 V SW -15 A
TLMC3B12121624T	3 BANK 12 V SEL-15 A, 12 V / 16 V SW -15 A, 24 V -10 A
TLMC3B121636T	3 BANK 12 V SEL-15 A, 12 V / 16 V SW -15 A, 36 V -10 A
TLMC3B122424T	3 BANK 12 V SEL-15 A, 24 V -10 A, 24 V -10 A
TLMC3B123636T	3 BANK 12 V SEL-15 A, 36 V -10 A, 36 V -10 A

## DC-to-DC Charging for Serious Marine Power Systems

Your alternator was built to maintain a starting battery—not properly charge today’s advanced lithium house banks.

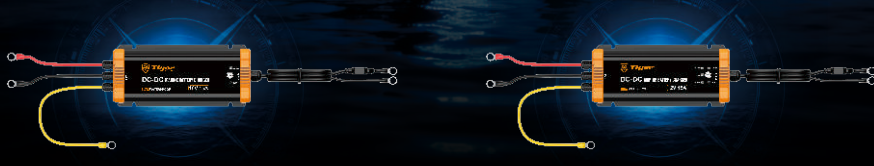
Tiger Lithium® DC-to-DC Chargers create the critical link between your engine’s charging system and your auxiliary batteries, delivering a precise multi-stage charge profile designed for maximum battery performance and longer service life.

Built for harsh marine environments, both models feature fully potted electronics, heavy-duty metal housings, IP67 waterproof protection, and integrated cooling fans for reliable operation. Pre-installed ring terminal leads simplify installation, while fused positive output leads provide added protection.

An accessory wire allows simple switch-controlled on / off operation for flexible system integration.

### Available Models

- 15 A charging current
- IP67 waterproof rating
- Accessory wire for external switch control
- Integrated cooling fan
- Fully potted electronics
- Heavy-duty metal housing
- Pre-installed input/output leads with ring terminals
- Fused positive output lead



## Tiger Lithium® High-Output Chargers Intelligent Multi-Chemistry, Multi-Voltage Charging

Tiger Lithium®’s High-Output chargers provide a compact and reliable solution for charging 12 V, 24 V, 36 V, and 48 V configurations in use-cases where fast charging of large capacity battery systems is needed. All High-Output chargers feature an aluminum housing paired with full - epoxy potting to seal internal circuitry against shock, humidity, and saltwater intrusion.

Each charger meets IP 67 standards, accept 100-240 V AC input, and includes 6-foot output leads with inline fuses and ring terminals for fast, professional installation. Designed for anglers, captains, and performance enthusiasts seeking a compact, straightforward charging solution that delivers charge profiles optimized for use with Tiger Lithium® marine batteries.



## Battery Specs

DC-to-DC On Board Chargers	
TLMCDC12T	1 BANK DC to DC 12V LFP-15 A
TLMCDC16T	1 BANK DC to DC 16V LFP-15 A

## Tiger High-Output Chargers

Part No.	Model
TLMC1430Y	12 V - 30 A High Output (w/o CAN bus)
TLMC1730Y	16 V - 30 A High Output (w/o CAN bus)
TLMC2820Y	24 V - 20 A High Output (w/o CAN bus)
TLMC4215Y	36 V - 15 A High Output (w/o CAN bus)
TLMC5115Y	48 V - 15 A RAPID Charger w/CAN bus
TLMC5122Y	48 V - 22 A RAPID Charger w/CAN bus

## Residential Lithium Battery Energy Storage System

TLES51097W Tiger Wall-Mounted Home Energy Storage Batteries combine sleek design with uncompromising safety and performance. Featuring a slim, space-saving profile, the battery wall integrates seamlessly into garage installations, maximizing usable space while delivering a clean, modern look. Powered by safe and highly stable LFP (Lithium Iron Phosphate) chemistry, the system offers long cycle life, excellent thermal stability, and reliable performance for everyday energy storage and backup power. Certified to UL 1934 and UN 38.3, Tiger battery walls meet rigorous safety and transportation standards. Supported by a 10-year warranty, they provide homeowners with a durable, elegant, and future-ready energy storage solution designed to perform reliably for years to come.



## Residential Lithium Battery Energy Storage System

TLES51120R Tiger Home and Small Commercial Energy Storage Batteries are engineered for flexibility, safety, and long-term reliability. Designed for easy installation, each system comes with purpose-built battery racks and supports seamless modular expansion, allowing batteries to be configured individually for residential use or clustered together to scale into small commercial energy storage systems. Built on super-stable LFP (Lithium Iron Phosphate) chemistry, Tiger energy storage batteries deliver exceptional thermal stability, long cycle life, and inherent safety. The system is UL 1934 certified, ensuring compliance with the highest standards for stationary energy storage. Backed by a 10-year warranty, Tiger provides dependable, future-ready energy storage solutions that grow with your power needs—whether at home or at work.



### Battery Specs

MODEL	TLES51097W
Nominal Voltage	51.2V
Configuration	16S21P
Nominal Capacity	96.6Ah
Chemistry	LFP
Weight	48 kg / 106 lbs.
Charging Temp	-4° F ~ 140° F
Discharging Temp	-4° F ~ 140° F
Max Continuous Current	Charge 80 A / Discharge 150 A
Voltage Range	44.8V ~ 56.4V
Communication	CAN / RS 485
Dimension (D*W*H)	175*366*580 mm / 6.9**14.4**22.8"
Certification	UI 1973 / UN 38.3

### Battery Specs

MODEL	TLES51120R
Nominal Voltage	51.2V
Configuration	16S26P
Nominal Capacity	119.6Ah
Chemistry	LFP
Weight	58 kg / 128 lbs.
Charging Temp	-4° F ~ 140° F
Discharging Temp	-4° F ~ 140° F
Max Continuous Current	Charge 80 A / Discharge 200 A
Voltage Range	44.8V ~ 56.4V
Communication	CAN / RS 485
Dimension (D*W*H)	529*482*222 mm / 20.8**19**8.7"
Certification	UL 1973 / UN 38.3

# Tiger Golf Cart Battery

## Engineered for Power, Built to Perform



### Unmatched Power Delivery

Provides up to 700 A peak discharge per battery, or up to 1,400 A when two batteries are connected in parallel. Supports regenerative braking and cold-weather charging down to -10 °C (14 °F).



### Advanced Battery Management System (BMS)

Features CAN / UART compatibility, anti-tamper detection, smart auto-sleep, and water ingress alerts. Built to ensure safety, prevent misuse, and extend system life.



### High-Safety Materials System

Built with 34145 full-tab LiFePO<sub>4</sub> cells, each passing nail penetration tests. Delivers 3,500+ cycles with low self-discharge, wide temperature tolerance, and eco-friendly chemistry free of nickel and cobalt.



### Smart Monitoring & Cloud Integration

Real-time data via Bluetooth app with cloud-based diagnostics and OTA upgrades. Enables remote monitoring, predictive maintenance, and full lifecycle visibility.



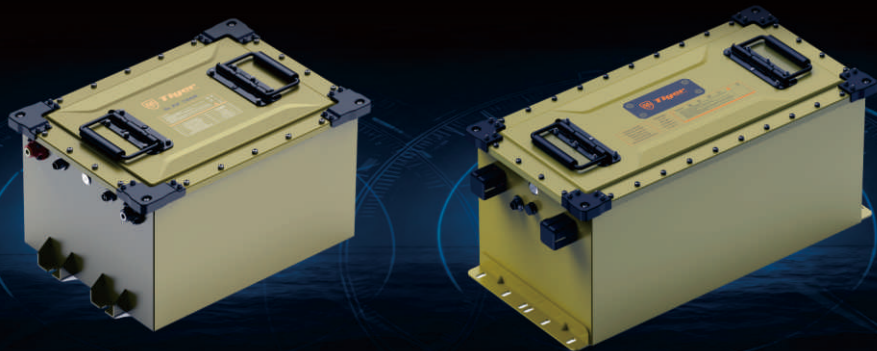
### 5-year full + 5-year prorated warranty

Backed by a 5-year full + 5-year prorated warranty, with app-based diagnostics and U.S.-based technical support. Delivers over 5x the lifespan of lead-acid batteries and features an unmatched local service network for fast, hands-on technical resolution.



## Battery Specs

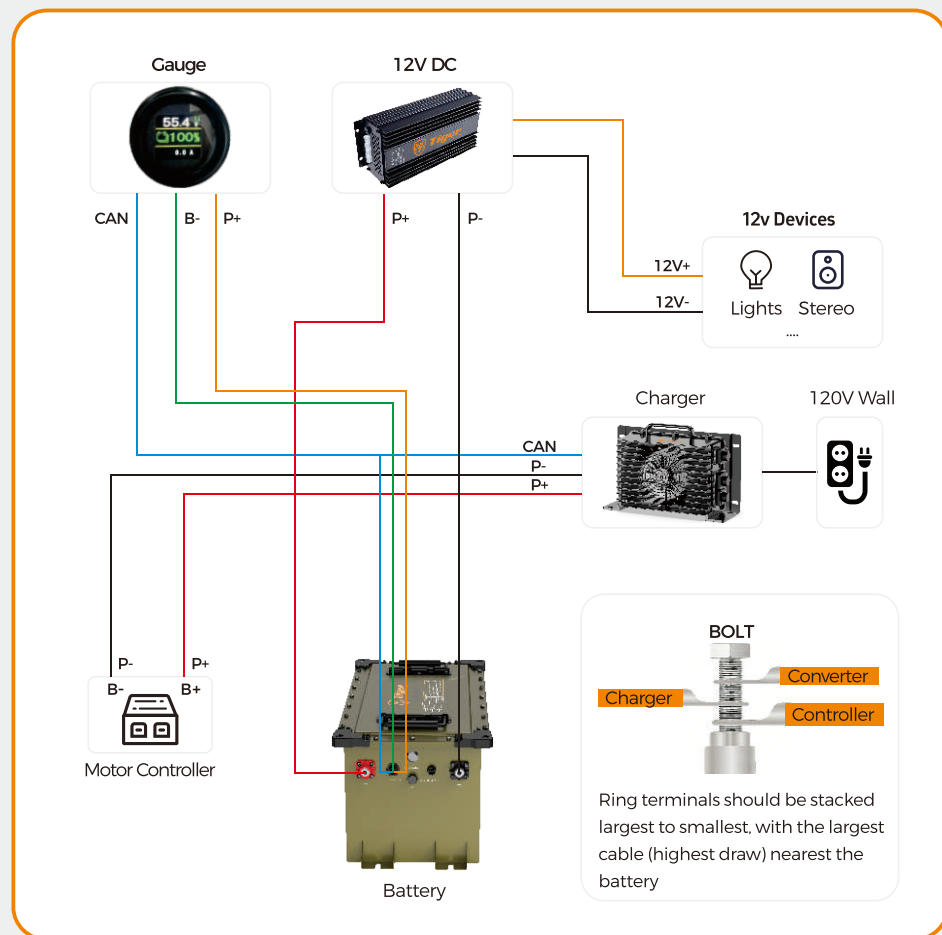
MODEL	TLGC48075-BO	TLGC48105-BO
Capacity	75 Ah	105 Ah
Voltage	51.2 V	51.2 V
Energy	3840 Wh	5376 Wh
Working Voltage Range	36.8-56.8 V	36.8-56.8 V
Full Charge Voltage	56.8 V	56.8 V
Weight	56.24 LB	112.44 LB
Standard Charge Current	22 A	22 A
Max. Charging Current	40 A	52 A
Max. Discharge Current	200 A Continuous, 250 A-360 s / 350 A-30 s / 700 A-3 s	
Max. Allowable Feedback Current	105 A / 30 s, 130 A / 5 s, 160 A / 0.5 s	
Charging Temperature Range	32°F-131°F	
Discharge Temperature Range	-4°F-140°F	
Cycle Life	3500 cycles	
Typical Full Charge Mileage	32-40 km(20-24 miles)	64-81 km(40-50 miles)
Self Consumption (monthly)	Max 1%	
Storage Temperature	-4°F-113°F (-20°C-45°C) (1 month)	32°F-95°F (0°C-35°C) (1 year)
Waterproof Rating	IP67	
Communication Method	CAN / UART	
Special Features	Bluetooth / photosensitive detection / humidity sensitive detection	



## Golf Cart Power System

Drop-in ready installation: Engineered for quick and seamless conversion—no rewiring or custom modification needed.

Each battery comes with a complete installation kit, including a high-performance TIGER charger, a 12 V TIGER DC-DC converter, and a smart digital gauge for effortless system monitoring.



## Gauge

Model: TL5M01

Supply Voltage: 9 V-80 V

Max Current: 30 mA

IP Rating: surface IP67, bottom IP54

Communication Mode: CAN

Display Information: Voltage / SOC / Fault Code



## 12V DC

Model: TLDC12

Input Voltage: 40 V - 90 V

Output Voltage: 13 V

Output Current: 0-25 A

Long-term Operating Power: 300 W

Efficiency:  $\geq 92\%$

IP Rating: IP66

Size: 7.28 x3.62 x1.81 in



## Charger

Model: TLCC4815Y / TLCC4822Y

Size: 11.1 x6.54 x3.94 in

Weight: 9.92 lbs.

IP Rating: IP66

Max Output: 15 A / 22 A

Max Output Power: 1284 W

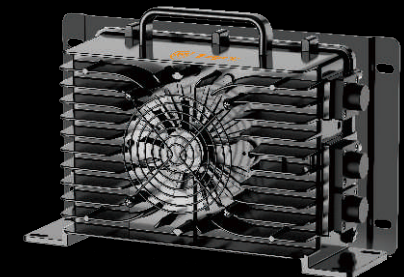
Output Voltage: 56.8 V

Max Output Current: 22 A

Communication Mode: CAN

Operating Temperature:  $-4^{\circ}\text{F}$  to  $149^{\circ}\text{F}$

Storage Temperature:  $-40^{\circ}\text{F}$  to  $158^{\circ}\text{F}$





Power global markets with  
premium lithium battery solutions

